



FOODSCAPE revolution

By: Brie Arthur



BRIE GROWS

Brie Arthur

“Brie the Plant Lady”

Author of
The Foodscape Revolution
Gardening with Grains

Originally from Monroe, MI

Based in Raleigh, NC Zone 7



15 years as a Propagator & Grower

Plant Delights & Camellia Forest

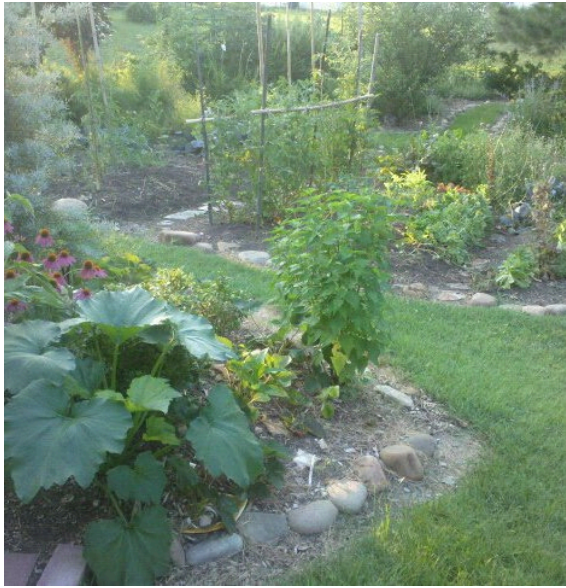


Growing Veggies with an HOA 2006



This why HOA's
don't like
veggie gardens





Building a Brand New Native Foodscape






Let's start a conversation
EVERYONE EATS!

This is NOT the best we can do



A close-up photograph of a garden bed. The scene is filled with various plants. On the left, there are dark purple basil leaves and small white flowers. In the center, a large purple eggplant is visible. To the right, there are bright yellow daisy-like flowers. At the bottom, there are red chili peppers. The background is a dense mix of green and purple foliage.

Foodscaping is an
opportunity to cultivate
BEAUTIFUL & BOUNTIFUL

What is a Foodscape?



FOODSCAPING:

Integration of edibles in traditional landscapes & containers

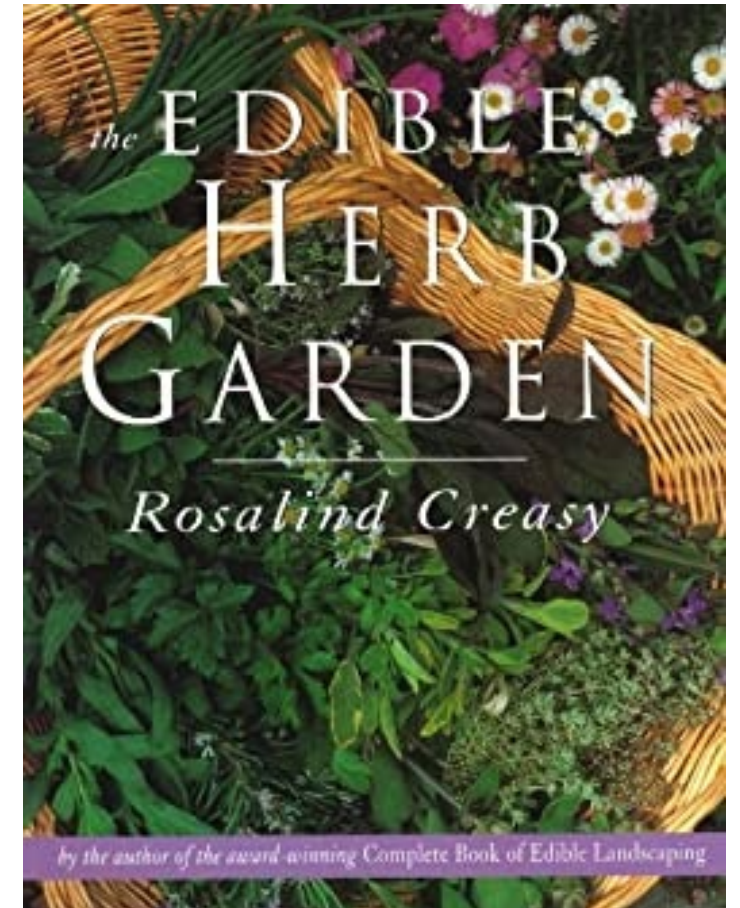
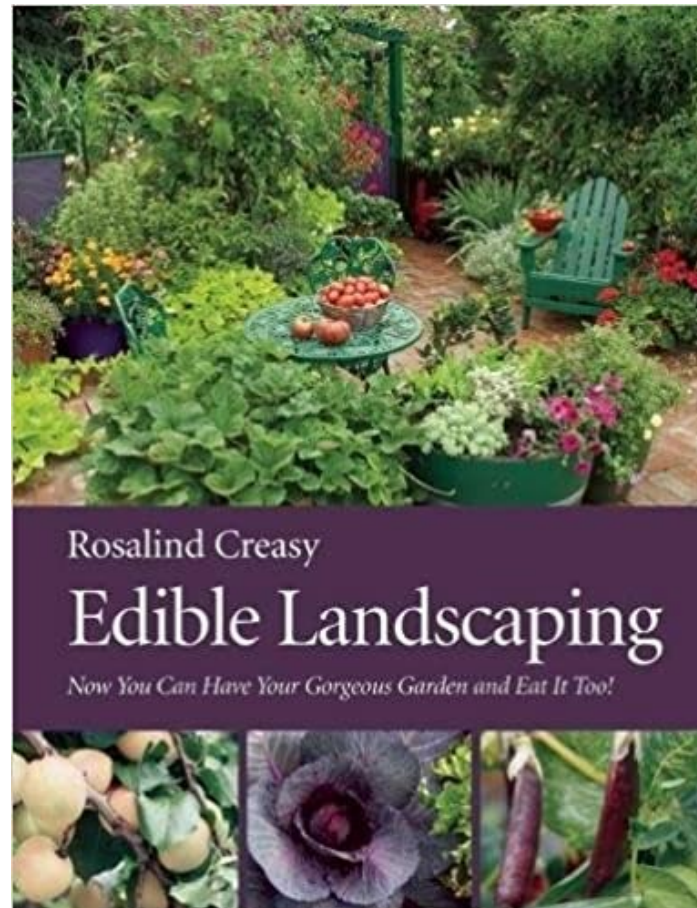


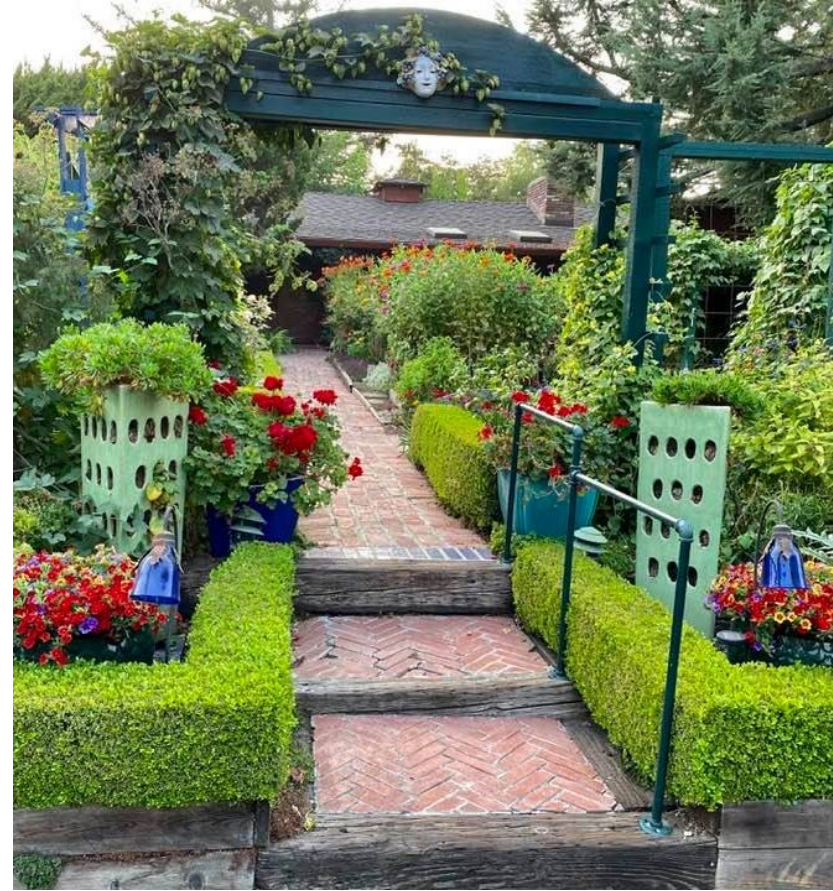
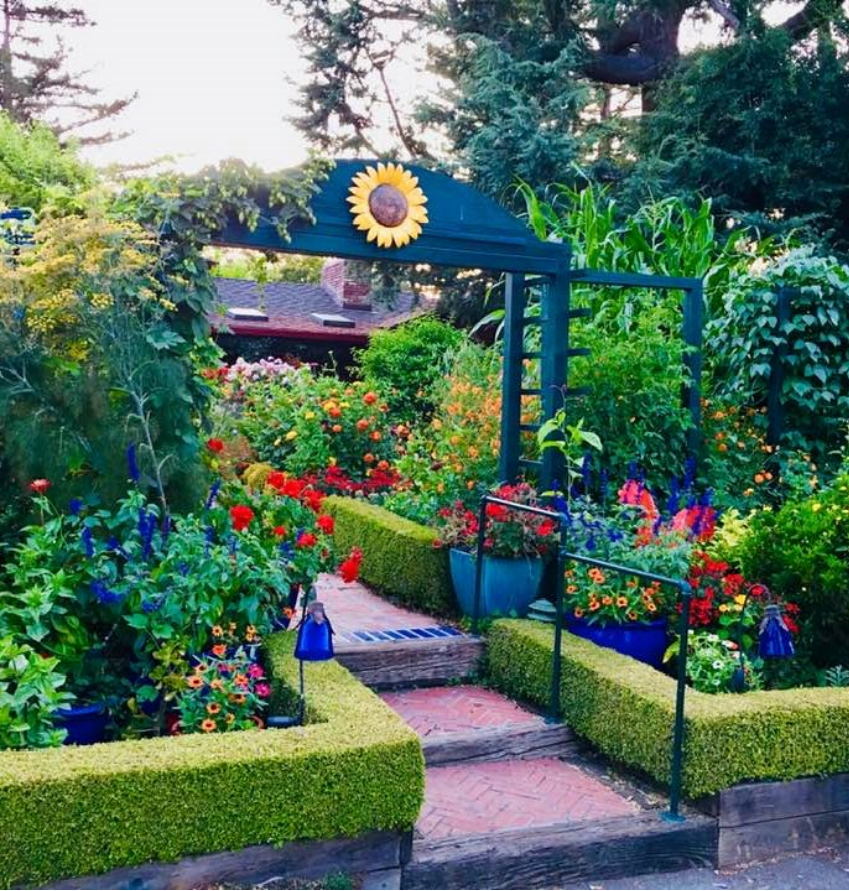
Illustration by Preston Montague

Containers are a great place to start Foodscaping
Learn more Saturday 2pm



Ros Creasy





Ros Creasy's Edible Landscape

Create a plan, drawn to scale

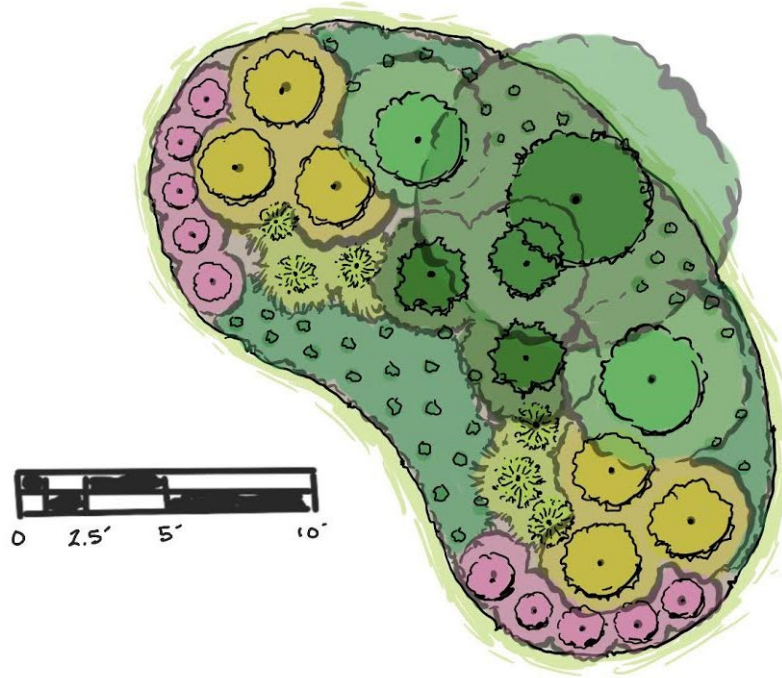


Illustration by Preston Montague

“Dessert Island”

Strawberry groundcover

Berry hedges

Fruit & Nut trees

Foodscape Design

The background of the slide features a low-angle shot of corn plants. The dark green, serrated leaves of the corn are in the foreground, partially obscuring the view. In the background, the tall, brown, feathery tassels of the corn cobs reach upwards against a clear, bright blue sky. The overall composition is vertical and emphasizes the height and structure of the crops.

- Grow practical crops seasonably
- Select ornamental trees, shrubs and perennials for structure
- Reduce (but not eliminate turf)
- Rotate crops seasonally
- Utilize cover crops/ green mulch applications to improve soil
- Focus on diversity not monoculture planting

Foodscape Growing Zones

ZONE 1: Closest to house/ water

50% ornamental 50% edible

ZONE 2: Middle of the yard

60% ornamental 40% edible

ZONE 3: Property Edges

80% ornamental 20% edible





You don't have to grow in straight lines

Veggies like more SUN than shade

Sunlight:

FULL SUN= 8+ hours

PART SUN = 4-6 hours

SHADE= 4 hours or less

Water:

DAILY = site close to hose!

WEEKLY = once established

**IF YOU GROW IT FOR
THE FRUIT OR
THE ROOT,
YOU NEED
FULL SUN.**



**IF YOU GROW IT FOR
THE LEAVES,
PARTIAL SHADE
IS ALL YOU NEED.**



UrbanOrganicGardener.com

Plant where it is
convenient to
water and
harvest





Utilize
existing open
mulch space



Success starts with **LIVING SOIL**
rich in organic matter



What is the “best” mulch? LEAVES

Triple Shred Hardwood
Pine Nuggets
Pine Straw
Cedar
Cypress



COLORED MULCH IS MADE FROM
GROUND PALLETS... BEWARE!

Not rated for food crops



I use a light layer of triple shred hardwood in December & June

- Available locally
- Helps suppress weeds
- Holds in moisture
- Looks neat and tidy
- Breaks down adding organic matter



Every fertilizer is DIFFERENT

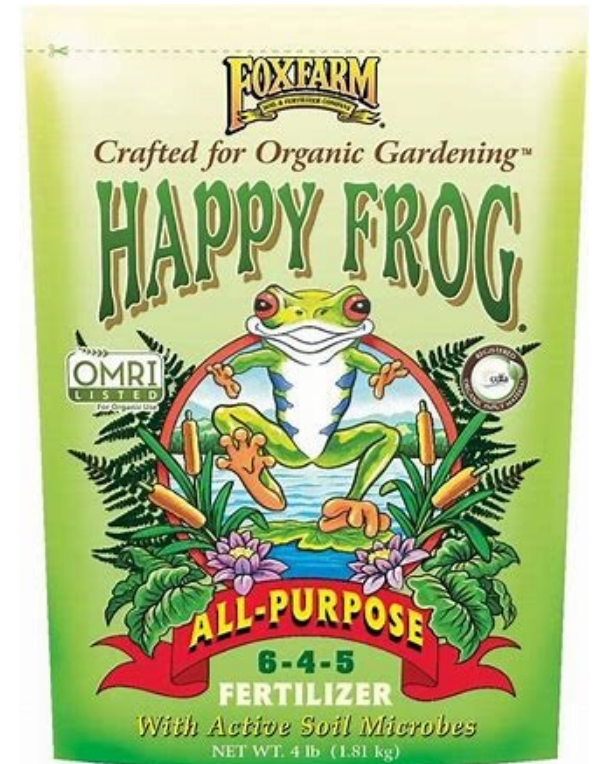
Pay attention to the N- P- K ratios UNDER 10

Essential macro-nutrients

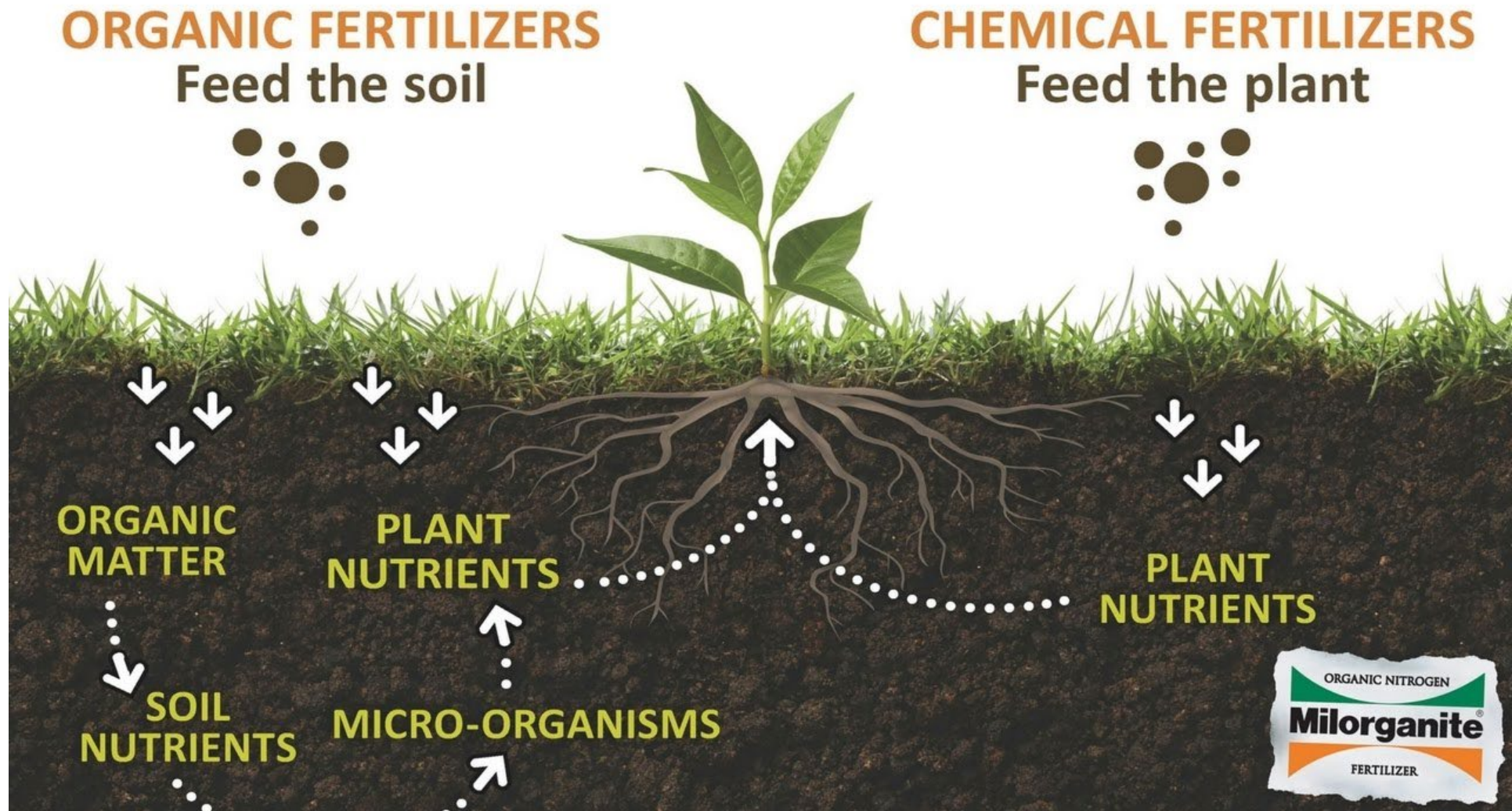
N= Nitrogen promotes leaf development

P= Phosphorus promotes root, blooms, and fruit set

K= Potassium promotes root and stem development



Synthetic chemistries reduce microbial activity



Put down the “blue stuff” and garden for the long-term health of your soil and plants



Too much fertilizer leads to insects



Insecticidal Soap

- Nontoxic
- Versatile
- Inexpensive
- Easy to make



1 tablespoon castile soap
1 quart of water per

Bt

Bacillus thuringiensis

- Caterpillar control
- Apply selectively
- Brassica Crops



Garden Disease Control

My approach is simple:

PULL THE PLANT OUT and focus on disease resistant varieties





What about the weeds?!



Weed Control 101: Hand Weeding is ALWAYS BEST!

DO NOT USE VINEGAR IN YOUR GARDEN!

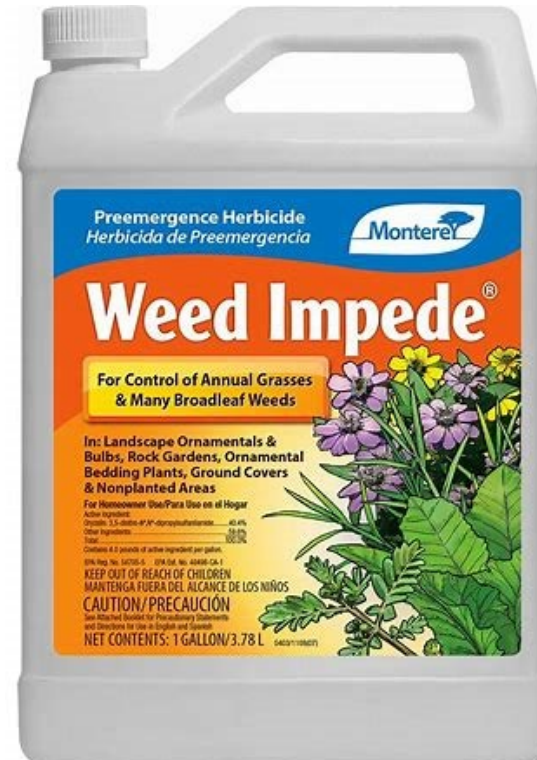
- Glyphosate “Round-up” is a broad-spectrum systemic herbicide and desiccant. Please use with care and always use the label rate
- Glufosinate – broadleaf weed herbicide; does not translocate well; Use with pre-emergent; Does not work on Bermuda, pigweed, some annual weeds

Ground plane coverage

- Direct seed with cover crops & veggies
- Eliminate open mulch space
- Reduce need for herbicide applications
- Utilize crop rotations to improve soil
- Inexpensive & efficient strategy
- Reduces need for mulch

DO NOT USE Pre-Emergent Herbicides

Prevents ALL seed from germinating





Cool Season Annual Greens

Direct Sow when the ground thaws

Arugula
Chard
Cilantro
Collards
Kale
Lettuce
Mustard
Spinach



Larkspur & Poppies

Favorite Spring Foodscape Combo

Barley

Crimson Clover

Buckwheat

Favorite Summer Foodscape Combo

A vibrant garden bed filled with a variety of summer plants. In the background, tall corn stalks with green husks stand prominently. To their left, a pepper plant with large green leaves and a single yellow flower is visible. In the foreground, there's a dense layer of plants including dark red coleus, yellow marigolds, and green basil. A tomatillo plant with small green fruits is on the far left. Buckwheat plants with small white flowers are scattered throughout the middle ground. The garden is set against a backdrop of dense green trees under a clear blue sky.

Corn

Peppers

Buckwheat

Tomatillo

Coleus &
Marigolds

Basil

Is Foodscaping “deer proof?”







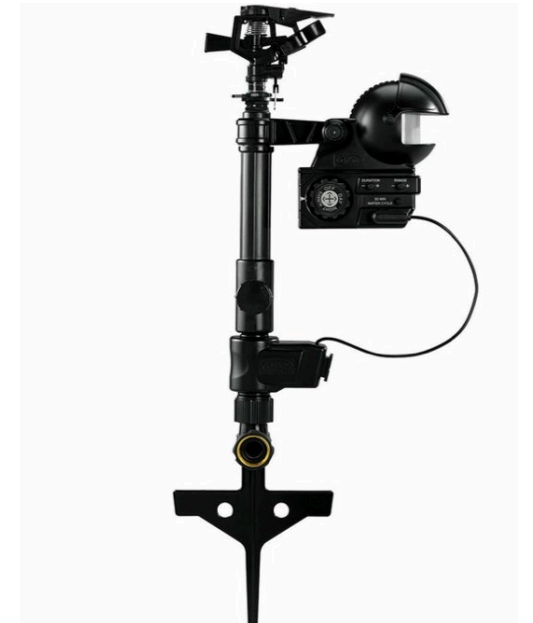
Fencing

Repellents

Reflective tape

Vole King Bags

Motion censored irrigation



Foodscaping SolutionS: Plant a Bed Edge

Arugula

Basil

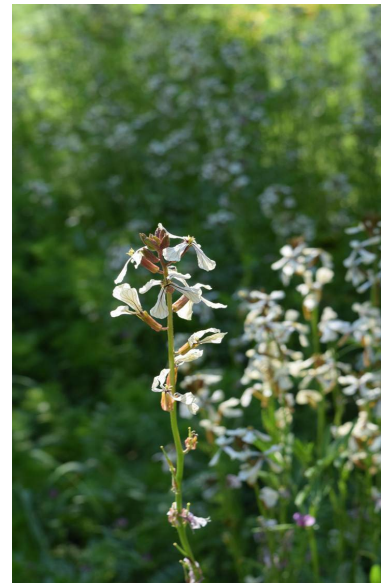
Garlic

Herbs

Mustard

Onions

Potatoes





Spicy Greens Groundcovers

Arugula, Chard, Lettuce, Kale, Mustard, Spinach seed together

Broadcast seed over 1" of Soil3 organic compost

Plant Sept-November

Harvest all fall-spring



Miz America Mustard along edges deters animals

Foodscaping Plant Palette



NATIVES

EDIBLES

BEST from all
categories!

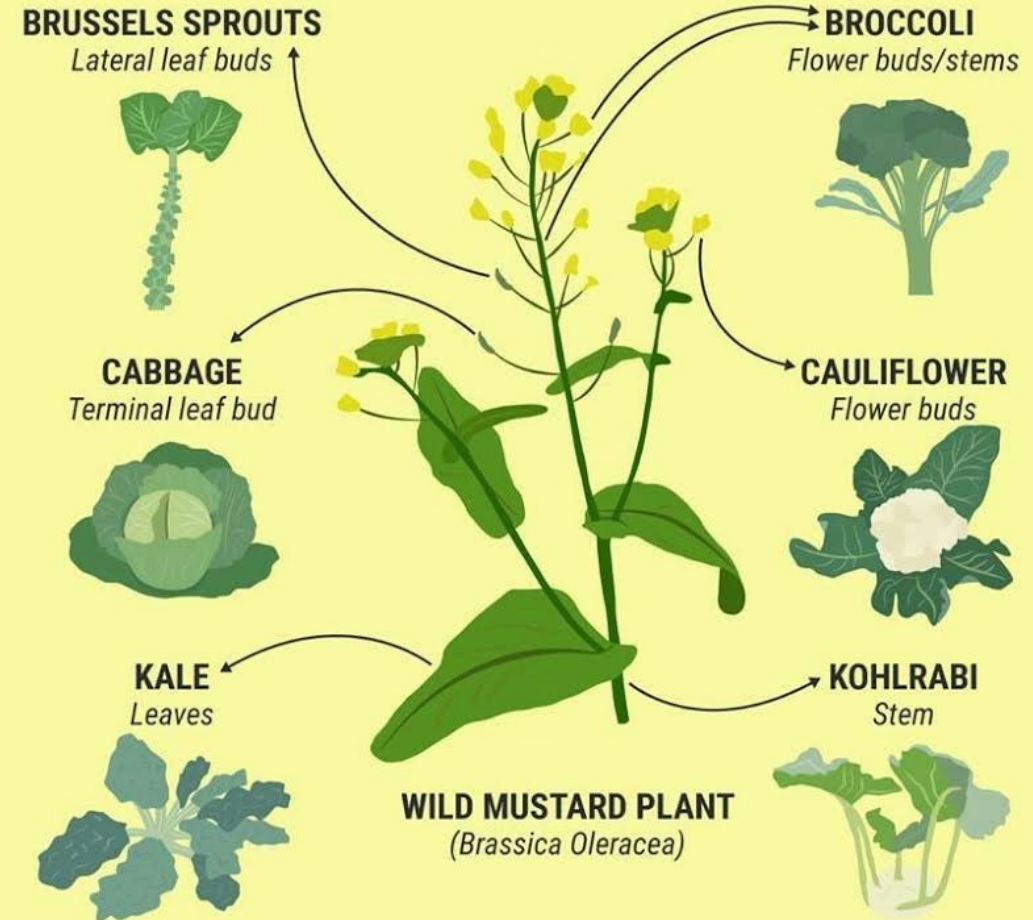
ECOLOGICAL

ORNAMENTALS

Food Crops LACK Diversity

6 vegetables that are the same plant

Over hundreds of years farmers have been breeding one plant – called *Brassica Oleracea* – into dozens of different varieties. These six vegetables you can find in the grocery store are actually all the same plant.



SOURCE: Botanist in the Kitchen

TECH INSIDER



Native & Ornamental Plants offer Biological Diversity



Plant Families represent diversity

<i>Apiaceae</i>	Celery Family
<i>Asteraceae</i>	Aster Family
<i>Brassicaceae</i>	Mustard Family
<i>Fabaceae</i>	Bean Family
<i>Lamiaceae</i>	Mint Family
<i>Liliaceae</i>	Lily Family
<i>Malvaceae</i>	Mallow Family
<i>Rosaceae</i>	Rose Family
<i>Solanaceae</i>	Tomato Family



Agastache foeniculum
'Blue Fortune'; 'Golden Jubilee'

Combined with leafy greens:
'Wildfire' Lettuce'

Amsonia hubrichtii “Blue Star”

Swiss Chard, Kale, Spinach



A monarch butterfly with black and yellow wings is perched on a cluster of bright orange milkweed flowers. In the background, a green corn cob is visible, slightly out of focus. The text 'Asclepias tuberosa' is overlaid in white script font at the top.

Asclepias tuberosa

Corn

Eggplant

Peppers

Baptisia



Arugula
Chard
Spinach

Fiber Optics Buttonbush



Cephalanthus occidentalis 'Bailoptics'

- Native deciduous shrub
- Zone 4 hardy
- Wet to dry soil
- Part-full sun
- 6' wide x 6' tall
- Fragrant flowers through summer
- Yellow fall color

IDEAL FOODSCAPE PAIRINGS

- Basil
- Broccoli
- Cabbage
- Cauliflower
- Eggplant
- Peppers

Brunswick- 90 days

Charleston Wakefield- 70 days

Earliana- 60 days

Golden Acre- 60 days

Late Flat Dutch- 100 days

Mammoth Red Rock- 90 days

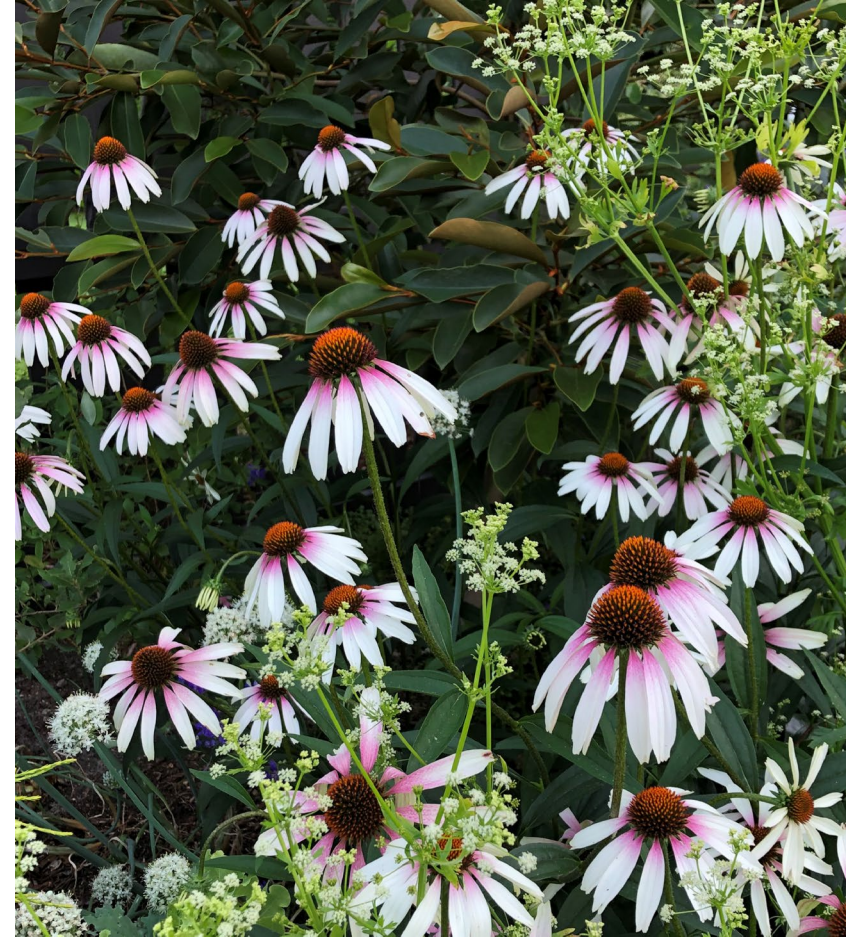
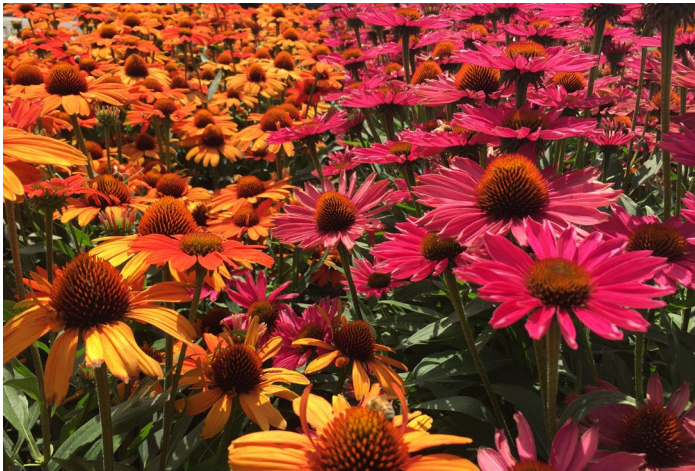
Red Acre- 80 days

Savoy Perfection- 90 days



Echinacea
purpurea
combined with
herbs:

Thyme
Rosemary
Basil

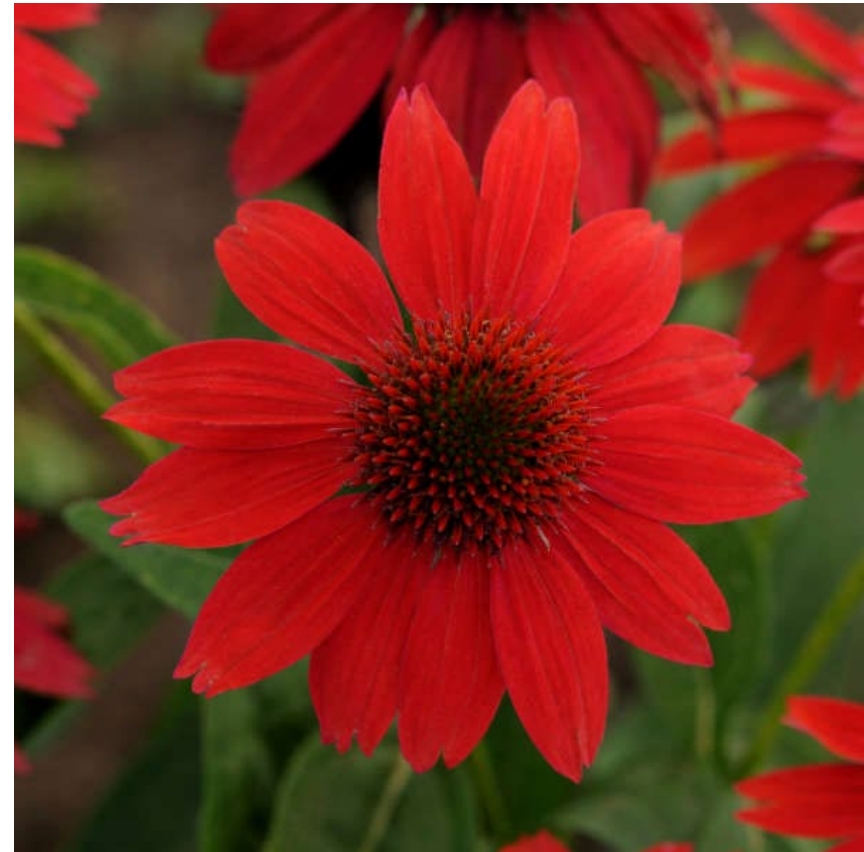


Sombrero Coneflower Series

Zone 4

Full sun

Average Soil



Spicy Globe Basil

- Plant in June along bed edges
- Space 8-12" apart
- Water as needed
- Best in full- part sun
- Strong scent deters deer, rabbits & groundhogs





Favorite Downy Mildew Resistant Basil:

‘Amazel’



Fireside Ninebark



Physocarpus opulifolius 'Umnharpell'

- Flowering deciduous shrub
- Zone 3 hardy
- Average soil
- Full sun
- 6' wide x 7' tall
- Pink flowers in summer
- Dark red foliage

IDEAL FOODSCAPE PAIRINGS

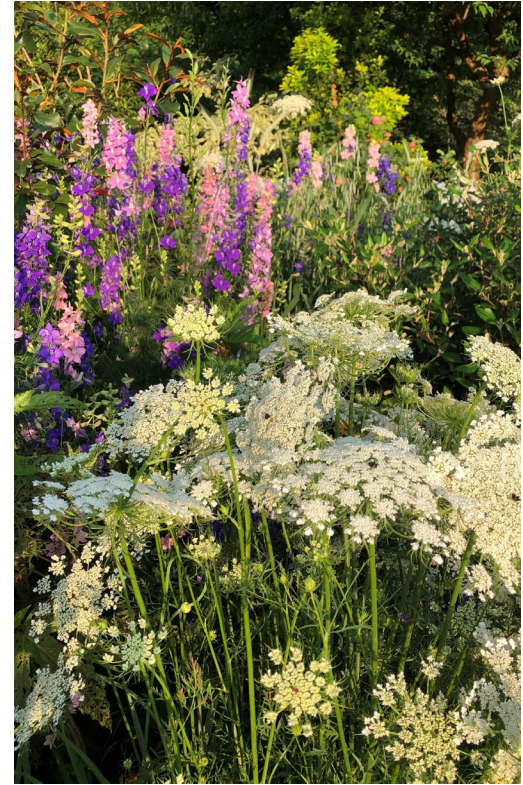
- Basil
- Eggplant
- Kale
- Potatoes
- Tomatoes

Cilantro
Mustard
Potatoes

Pycnanthemum muticum



Phlox paniculata 'Bright Eyes'



Carrots
Cilantro
Dill
Fennel
Parsley

Hosta

Zone 3

part sun

Average Soil

IDEAL FOODSCAPE PAIRINGS

- Basil
- Garlic
- Onion
- Potatoes



Early, Mid & Late season potato varieties

- All Blue
- Bintje (an heirloom)
- Butte
- Canela Russet
- Carola
- Desiree
- Fingerling varieties
- German Butterball
- Kennebec
- King Harry
- Purple Peruvian





The French Fry Story

Potatoes have poisonous foliage





Harvest
“new”
potatoes
when they
flower

Plant NOW in March
Harvest in mid June





Cooked and served those potatoes
Now he knows exactly where french
fries come from!

Want to make a
difference in
the world?



Add Garlic to
landscape
borders

Hardneck Garlic

- Short Shelf Life (3-6 months)
- Strong flavor
- Impossible to braid
- Thrives in cold climates
- Produces a flower scape
- Common varieties:
 - Music
 - German Red/ White
 - Spanish Roja
 - Red Russian
 - Chesnok Red



Favorite Variety: 'Music'



Southern Exposure
Seed Exchange

Plant in fall/
early spring
along bed edges
to deter VOLES

Remove flower
scape in spring





Harvest the
bulbs when
foliage dies in
late Spring



Mid June
Harvest & Cure 2-3 weeks





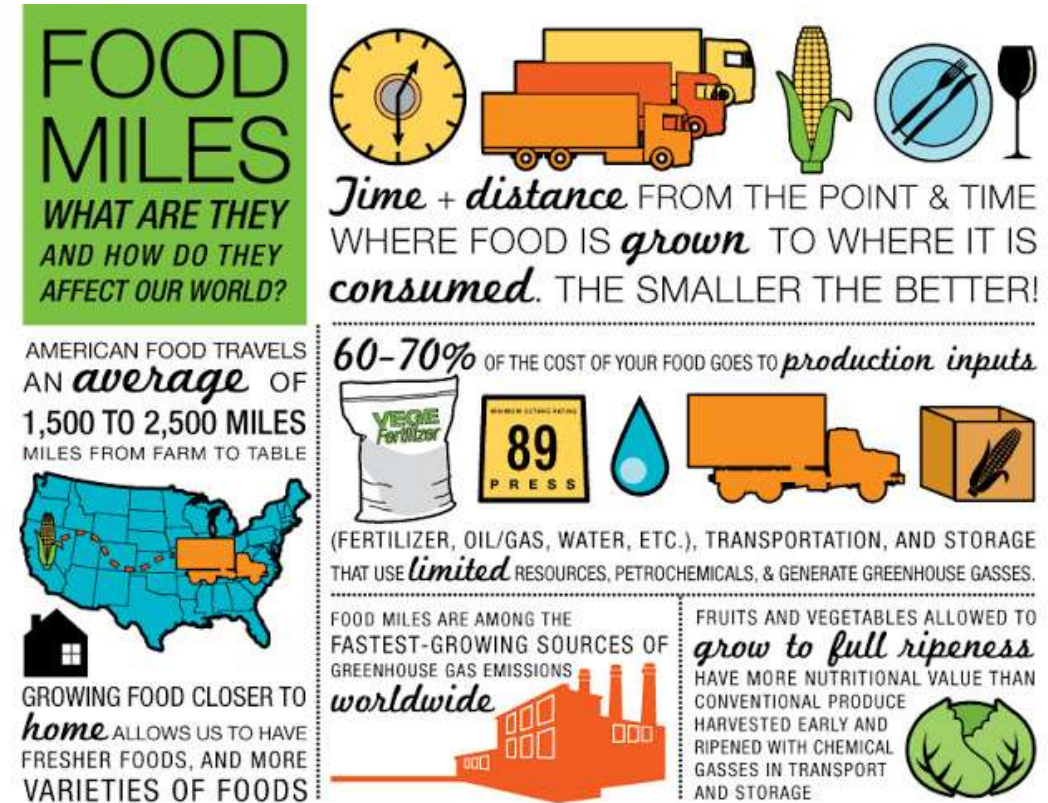
As of 2012, China is the largest producer of garlic

59 million metric tons annually

66% world production

90% garlic sold in US

US AVERAGE 2,200 MILES PER PRODUCT



DREAM BIG!





Every garden offers an opportunity
to grow beauty & bounty

BRIE GROWS 



How to start a Foodscape Revolution



Installing Foodscapes for neighbors
during the Covid-19 Pandemic

Filming Growing A Greener World TV





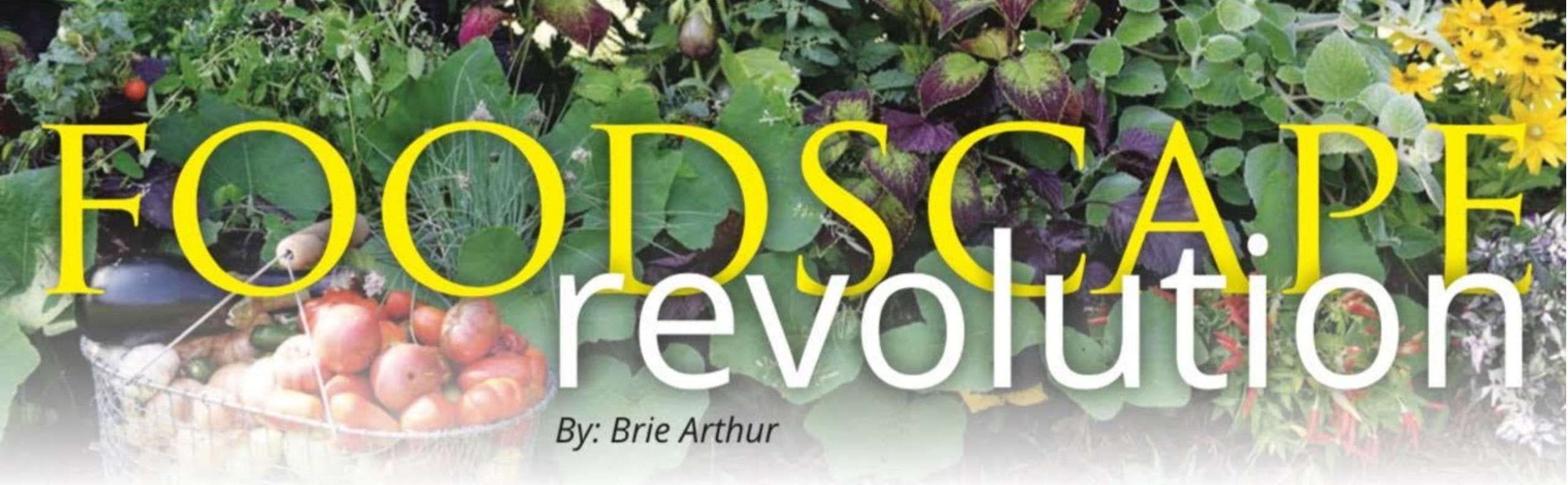
Episode 1102: The Foodscape Revolution

BY GGWTV ON SEPTEMBER 12, 2020



Watch anytime
on GGWTV.com

or check local
PBS listings



FOODSCAPE revolution

By: Brie Arthur

Thank you





BRIE GR^{OWS}



Brie Grows



BrieThePlantLady



YouTube Brie the Plant Lady